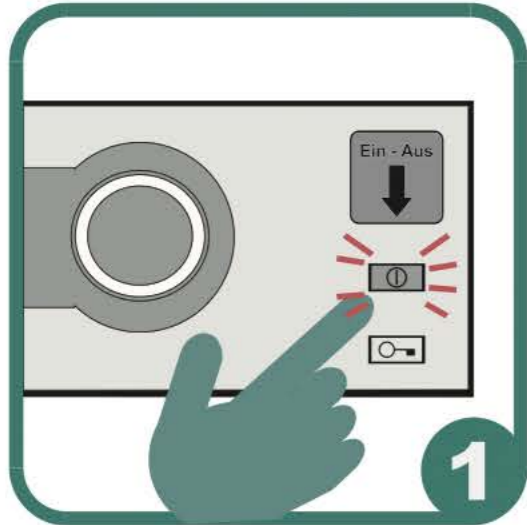
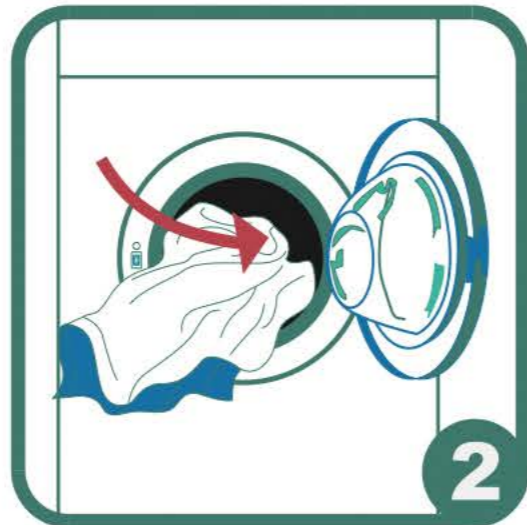


Waschen

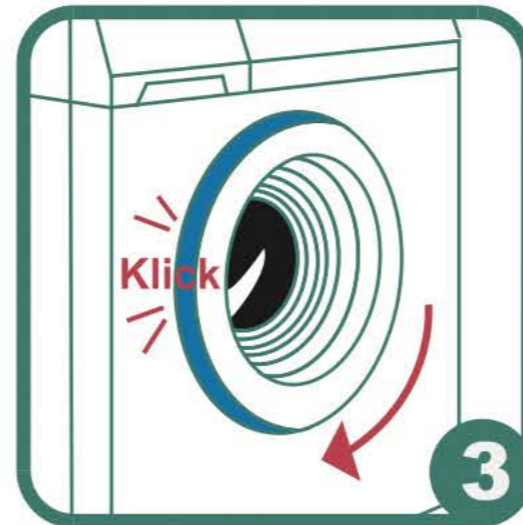
Maschine einschalten.



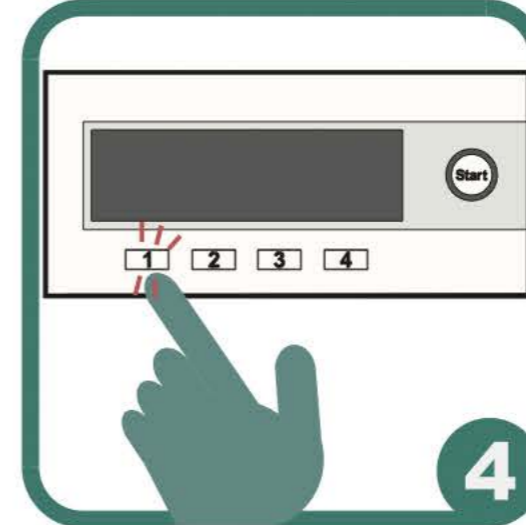
Wäsche in die Waschmaschine füllen.



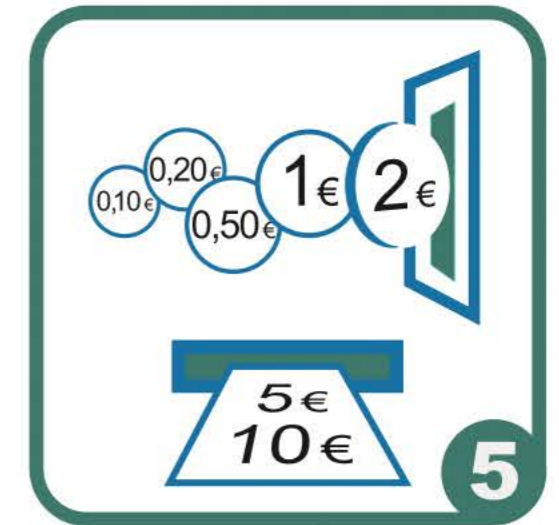
Waschmaschinentür gut schließen.



Waschprogramm wählen.



Am Kassenautomaten bezahlen.



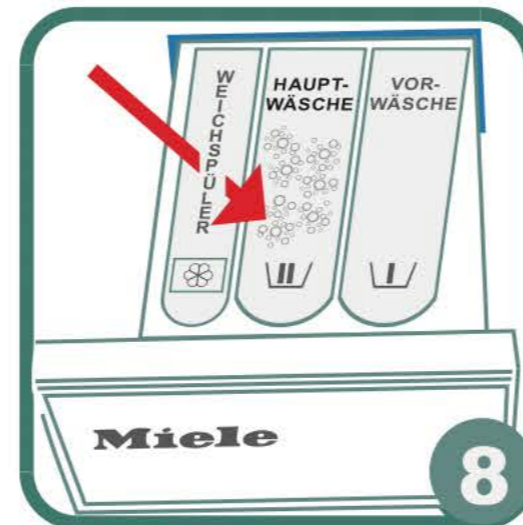
Nummer für Waschmaschine drücken.



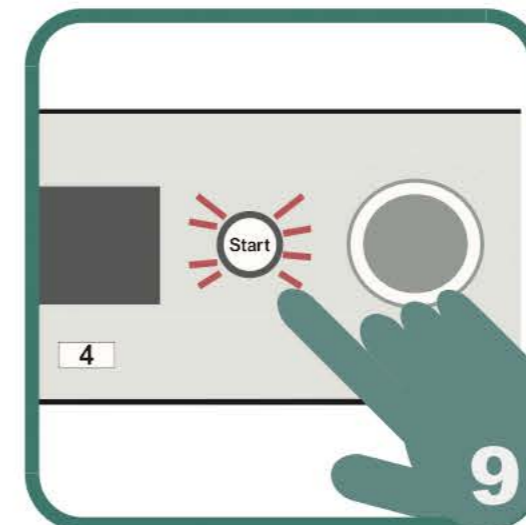
Waschpulver und Weichspüler kaufen.



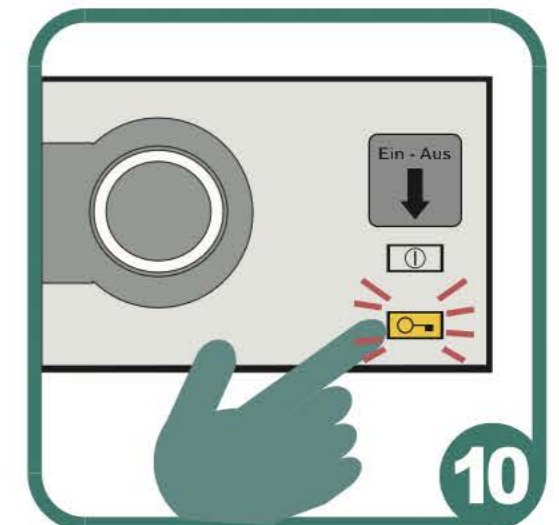
Waschpulver in die Maschine füllen.



Start-Taste drücken. Waschzeit ca. 45 Min.



Am Ende gelbe Türtaste drücken.



Eco-Express